

Welcome to the East Area Planning Committee

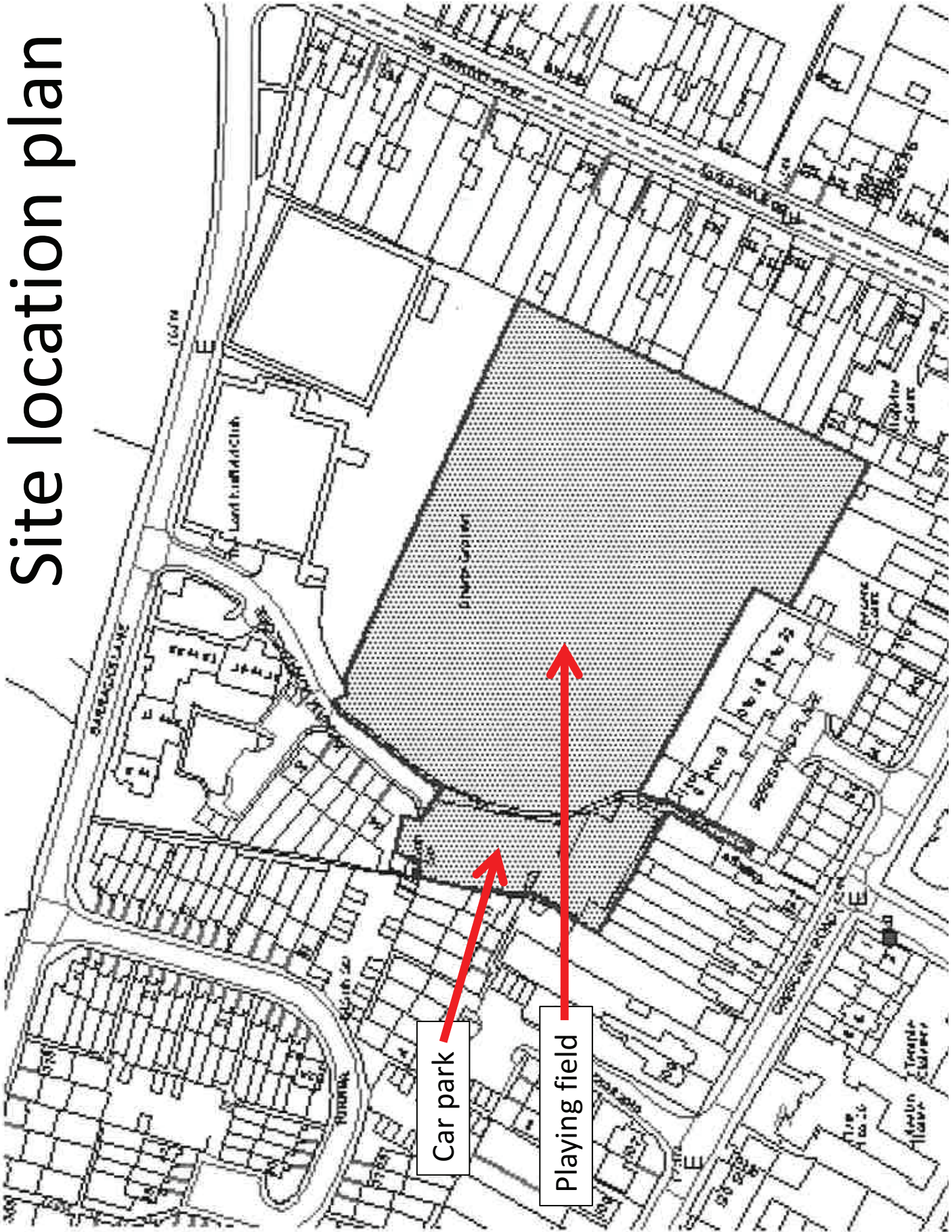
- **This planning committee meeting is held in public, but it is not a public meeting.**
- **There will be opportunity for the public to address the committee on each application.**
- **If you wish to speak for or against a planning application, you will need to have either requested it in advance, or fill out and hand in one of the available speaker forms.**
- **Information on meeting protocol and conduct at committee is set out in the Code of Practice.**
- **You can find a copy of the Code of Practice in the committee agenda, just before the first planning application report.**

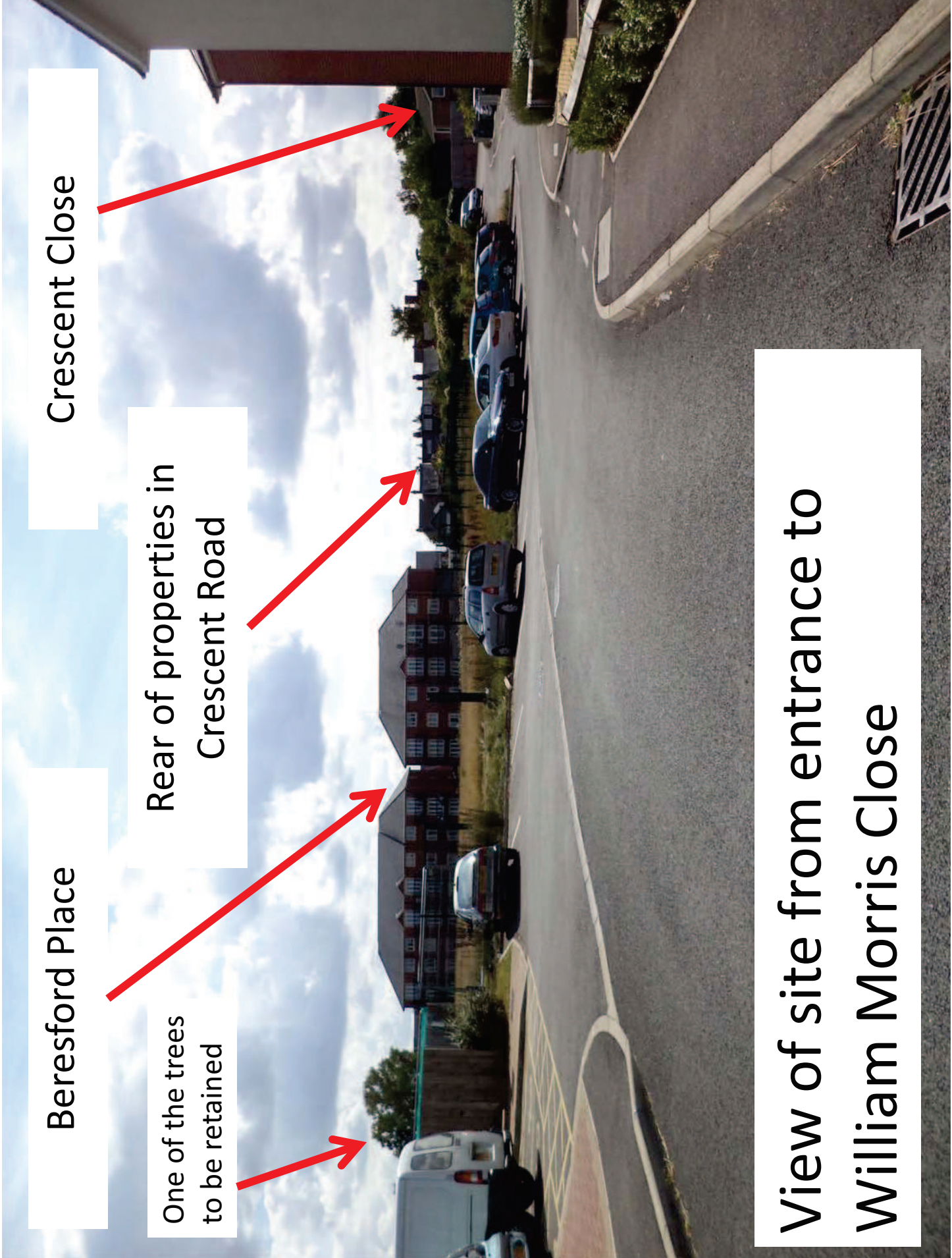


www.oxford.gov.uk



Site location plan





View of site from entrance to William Morris Close



South east part of site – main housing area,
also showing retained trees



South west part of site – existing car park
proposed to be developed

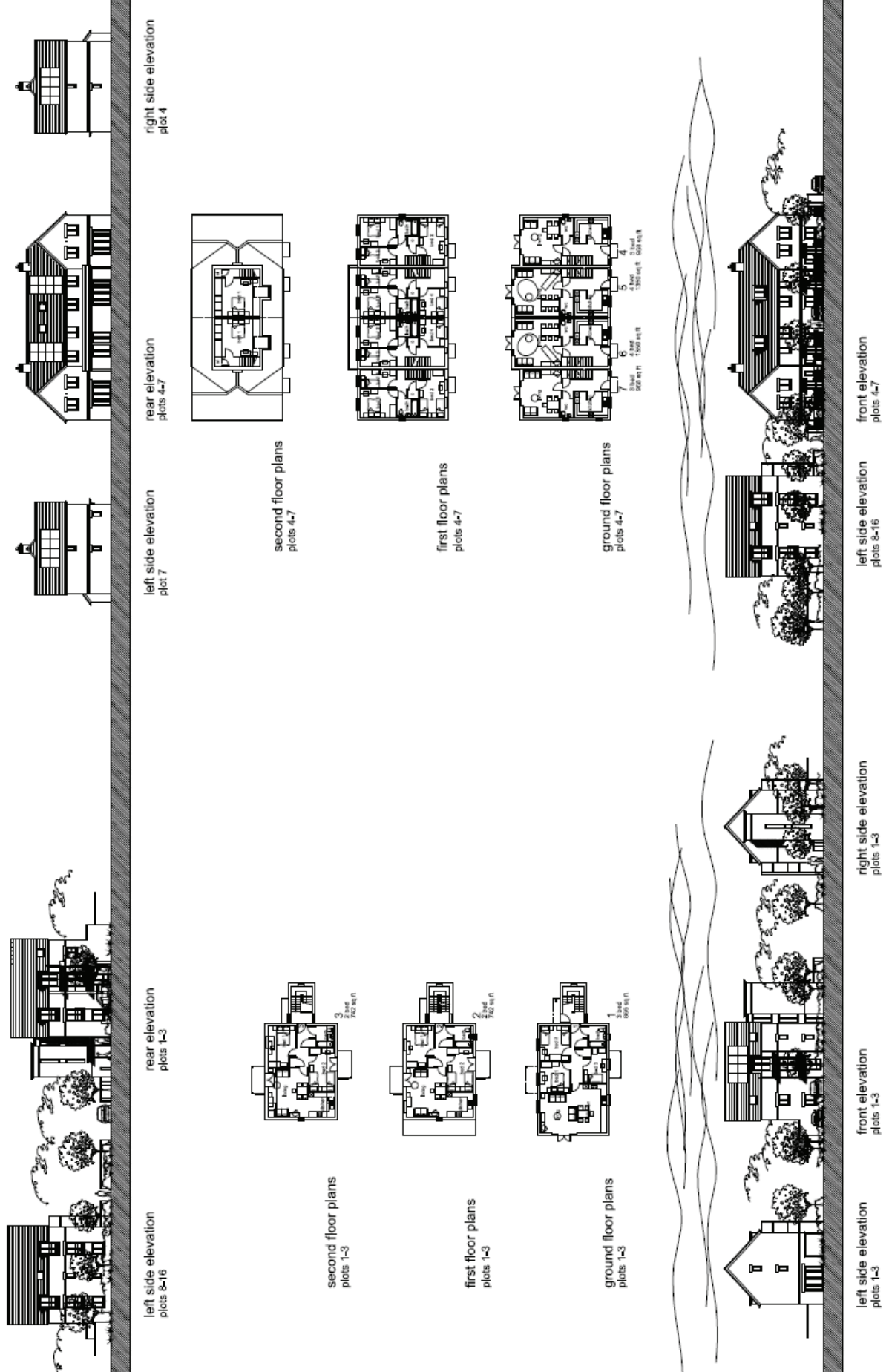


**View north of William Morris Close and
former Lord Nuffield Club**

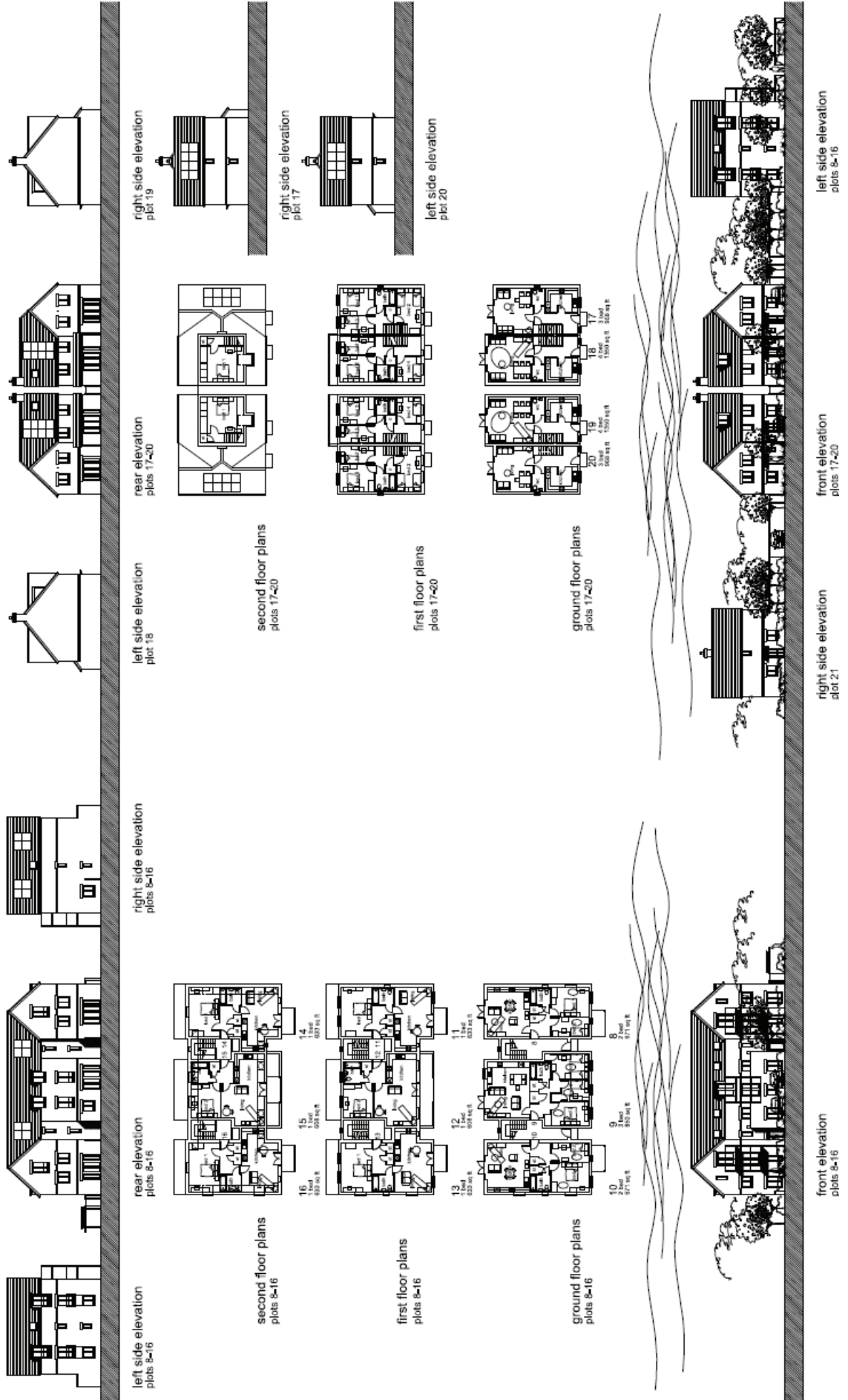
Proposed Site Plan

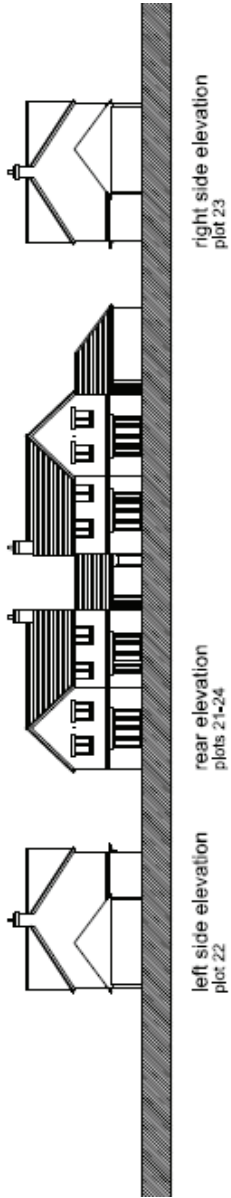


Proposed elevations and floor plans plots 1 - 7

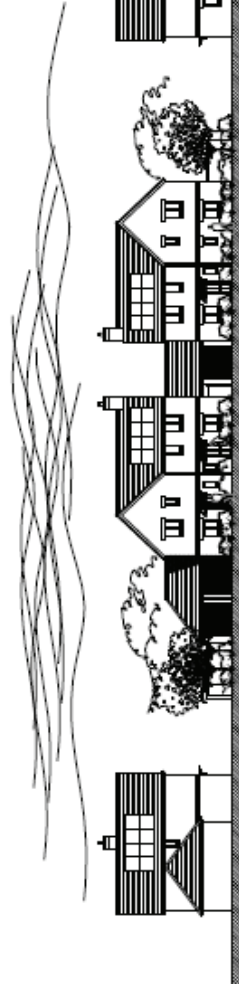
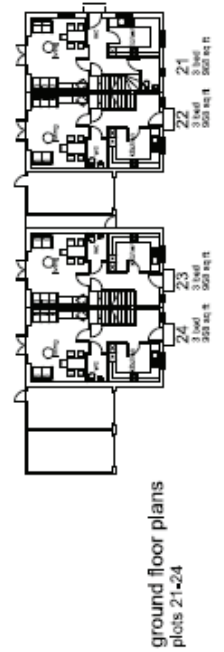


Proposed elevations and floor plans plots 8 - 20





Proposed elevations and floor plans plots 21 - 24



Proposed elevations and floor plans plots 25 - 40

The architectural drawings are organized into several sections:

- Left side elevation plots 31-34:** Shows the left profile of plots 31, 32, 33, and 34.
- Right side elevation plots 31-34:** Shows the right profile of plots 31, 32, 33, and 34.
- Second floor plans plots 25-40:** A central section showing the second floor layouts for plots 25 through 40.
- First floor plans plots 25-40:** Shows the first floor layouts for plots 25 through 40.
- Ground floor plans plots 25-40:** Shows the ground floor layouts for plots 25 through 40.
- Rear elevation plots 25-40:** Shows the rear profile of plots 25 through 40.
- Left side elevation plots 35-40:** Shows the left profile of plots 35, 36, 37, 38, 39, and 40.
- Right side elevation plots 35-40:** Shows the right profile of plots 35, 36, 37, 38, 39, and 40.
- Front elevation plots 25-40:** Shows the front profile of plots 25 through 40.

Previously refused site
plan: 12/02967/FUL

